



F-86-13

Coshocton County's Forest Economy

Eric McConnell, Ph.D.

Forest Operations and Products Specialist
Ohio State University Extension

Emily Adams

Agriculture and Natural Resources
Ohio State University Extension, Coshocton County

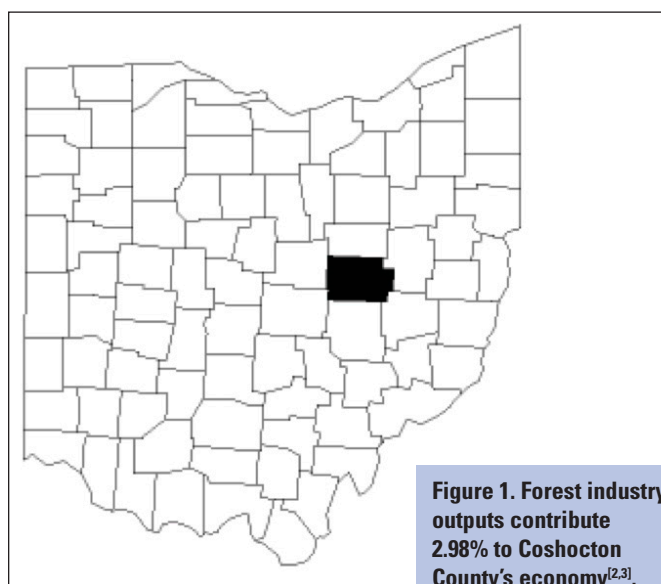


Figure 1. Forest industry outputs contribute 2.98% to Coshocton County's economy^[2,3].

Coshocton County contains 564 square miles (360,960 acres) of land and is home to 36,900 citizens^[1]. There are 163 industries in the county^[2], with the median household earning an income of \$39,470^[1]. Major employers include businesses in the sectors of state and local governments, food services, private hospitals, and general merchandise retail stores^[2].

The land resources of Coshocton County provide many economic benefits. The county's 1,020 agricultural farms produce a variety of agronomic crops and livestock^[3]. An abundance of wooded acres are also present, providing

community support to the county's forest industries. These businesses generate \$85.6 million in industrial output and \$4.06 million in taxes^[2].

Some of the many contributions Coshocton County's forests and forest industries provide to the local economy are illustrated in this fact sheet using key figures and statistics. Figures 2–4, describing Coshocton County's forest resources, were constructed using data from the 2011 forest survey database provided by the United States Forest Service's Forest Inventory and Analysis. Figures 5–8 explain the county's forest industries and were developed from data analyzed using IMPLAN®. Table 1 summarizes the IMPLAN® model for Coshocton County's economy^a.

Benefits of Woodland Management

- Properly managing your woodland improves forest health, aesthetics, and wildlife habitat. It also provides soil stabilization, clean water, carbon sequestration, self-satisfaction, and a potential source of income.
- Managing timber requires less long-term inputs compared to many other land uses.
- You are often able to obtain cost share funds to establish your woodland, property tax credits while managing your forest property, and preferable tax treatment at harvest.
- Standing timber is a stable form of wealth, often comparable in performance to mutual fund investments.

^aFor more information regarding IMPLAN® and the economic impact analyses for Coshocton County, please contact the first author in the School of Environment and Natural Resources.

Figure 2. Coshocton County contains nearly 200,000 forested acres, which is 53.8% of the total land cover. Figures were based on estimates combined from [1,3,5].

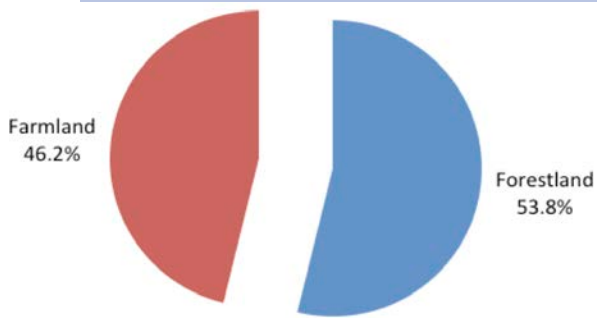


Figure 3. Nonindustrial private forest landowners are very important to Coshocton County's forest economy as 91.6% of its forestland is privately owned, approximately 180,000 acres^[5].

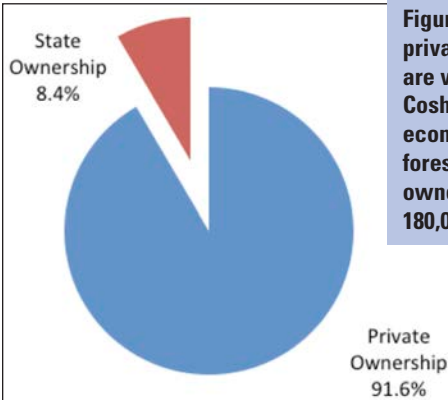


Figure 4. Coshocton County's forests contain 1.3 billion board feet of sawtimber^[5]. The top five species make up 63.0% of the total standing volume.

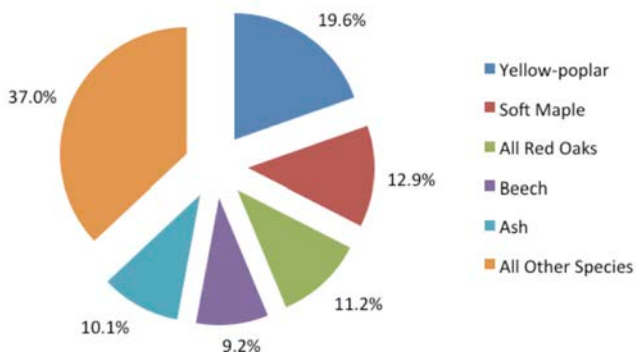
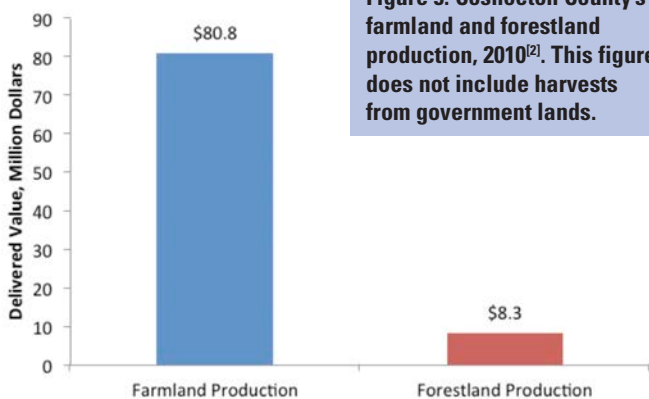


Figure 5. Coshocton County's farmland and forestland production, 2010^[2]. This figure does not include harvests from government lands.



How Can I Learn to Better Manage My Woodland?

- Become actively involved in the stewardship of your property.
- Join your local forestry association.
- Search Ohio State University Extension's website OhioLine (<http://ohioline.osu.edu/for-fact/index.html>) for further study of forestry related topics.
- Contact your local service forester at the Ohio Division of Forestry to help you develop a management plan for your property.
- Obtain soils and management information for trees suited to your soil types at your local Soil and Water Conservation District.
- Enlist the assistance of a professional forester when planning a timber sale.
- Consider hiring an Ohio Master Logging Company to conduct your harvesting operation.

For More Information, Please Consult the Following Sources:

School of Environment and Natural Resources

The Ohio State University
2021 Coffey Rd.
Columbus, OH 43210
Phone: (614) 688-3421
Web: <http://www.ohiowood.osu.edu/>
<http://woodlandstewards.osu.edu/>

Ohio State University Extension, Coshocton County

724 South 7th St., Room 110
Coshocton, OH 43812
Phone: (740) 622-2265
Fax: (740) 622-2197
Web: <http://coshocton.osu.edu/>

Ohio Division of Forestry

10517 Canal Rd.
Hebron, OH 43025
Phone: (740) 928-7034, ext. 241
Fax: (740) 928-6039
Web: <http://www.ohiodnr.com/Home/landowner/LandownerAssistance/tabid/5279/Default.aspx>

Coshocton Soil and Water Conservation District

724 South 7th St.
Coshocton, OH 43812
Phone: (740) 622-8087
Fax: (740) 622-7047
Web: <http://www.coshoctonswcd.org>

Ohio Society of American Foresters

www.osafdirectory.com

Ohio Forestry Association

Master Logging Company Program

Office: 746 Morrison Rd., Columbus, OH 43230

Mail: 1100-H Brandywine Blvd., Zanesville, OH 43701

Phone: (614) 497-9580

Fax: (614) 497-9581

Web: <http://www.ohioforest.org/>

Call Before You Cut

Phone: (877) 424-8288

Web: <http://www.callb4ucut.com/>

Terminology^[5,6]

Acre: A unit of land measure equal to 43,560 square feet (208.7 feet × 208.7 feet). One square mile equals 640 acres.

Direct Economic Impact: The effect generated by the industry of interest in an economic impact analysis. This is measured through employment, value-added, and industrial output produced to meet demand for the manufactured product(s).

Direct Federal Tax Impact: Taxes collected by the United States government. These taxes are generated from labor income, indirect business taxes, households, and corporations associated with the industry of interest.

Direct State and Local Tax Impact: Taxes paid to state, county, and municipal governments. These taxes are generated from labor income, indirect business taxes, households, and corporations associated with the industry of interest.

Employment: The total wage and salary and self-employed jobs in a geographical area.

Indirect Business Taxes: Sales and excise taxes paid by individuals to businesses through normal operations. They do not include taxes on corporate profits and dividends.

Industrial Output: The total value of production measured as the sum of value-added plus the cost of buying goods and services to produce the product(s).

Labor Income: Wages and benefits paid to employees plus proprietary income for self-employed work.

Sawtimber Volume: Net volume in board feet by the International 1/4-inch rule of sawlogs in sawtimber trees on timberland. Gross volume minus the deductions that affect use for lumber equals net volume.

Value-Added: The sum of labor income, interest, profits, and indirect business taxes.

Figure 6. Direct economic impact of Coshocton County's forest industries, 2010^[2]. Labor income, value-added, and industrial output are represented on the left Y-axis, and employment is represented on the right Y-axis.

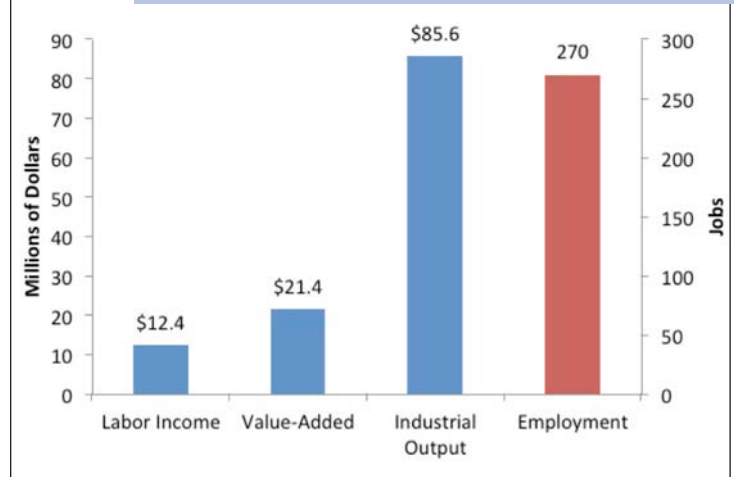


Figure 7. Coshocton County's forest industry employers by sector, 2010^[2].

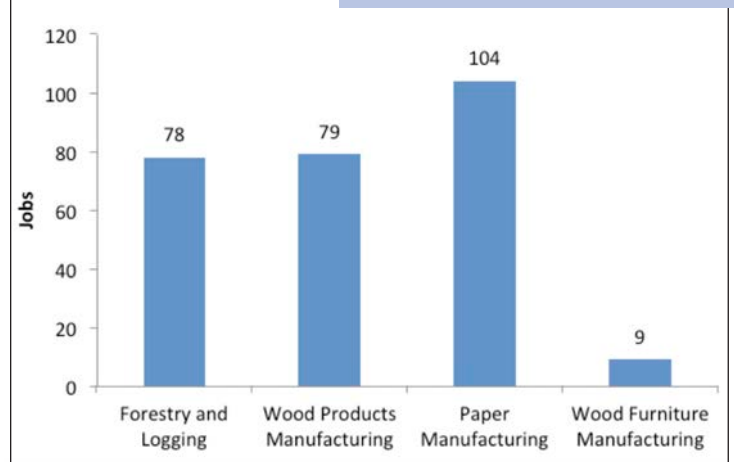


Figure 8. Direct tax impact of Coshocton County's forest industries, 2010^[2].



Table 1. Direct industrial contributions within Coshocton County's economy, 2010^[2]. The IMPLAN® model's 440 sectors were aggregated into 12 industries by each sector's 2-digit North American Industry Classification System (NAICS) code number. A (----) indicates less than five employees or a value less than \$500,000 to prevent potential disclosure of individual company information.

Industry NAICS Description	Employment	Labor Income	Value-Added	Industrial Output
11 Agriculture, Forestry, Fishing, and Hunting	1,215	\$18,251,392	\$30,112,028	\$92,329,569
113 Forestry and Logging	78	\$3,311,099	\$3,254,085	\$7,536,879
21 Mining	545	\$29,958,265	\$59,035,829	\$88,934,176
22 Utilities	417	\$53,024,499	\$195,148,123	\$225,299,215
23 Construction	1,035	\$17,920,207	\$27,723,852	\$98,392,174
31–33 Manufacturing	2,689	\$153,475,063	\$252,690,510	\$1,364,951,399
321 Wood Products Manufacturing	79	\$2,607,850	\$3,653,683	\$11,702,880
322 Paper Manufacturing	104	\$6,282,016	\$14,282,989	\$65,467,116
337 Wood Furniture Manufacturing	9	(----)	(----)	\$942,046
42 Wholesale Trade	245	\$9,950,823	\$23,024,756	\$31,533,508
44–45 Retail Trade	2,077	\$36,776,311	\$61,939,399	\$102,806,706
48–49 Transportation and Warehousing	698	\$30,873,560	\$41,043,857	\$83,447,221
51–56 Professional Services	3,710	\$78,360,459	\$232,385,215	\$413,693,380
61–72 Educational, Health, and Recreation Services	3,352	\$83,769,675	\$101,288,273	\$194,837,090
81 Other Services	1,118	\$32,206,494	\$34,199,634	\$66,279,711
92 Government and non-NAICS Industries	1,829	\$82,222,859	\$94,147,038	\$115,839,319
Forest Industries	270	\$12,432,053	\$21,452,677	\$85,648,921
Total	18,928	\$626,789,605	\$1,152,738,515	\$2,878,343,470

References

- [1] United States Census. 2010. United States census quick facts. <http://quickfacts.census.gov/qfd/states/39/39031.html>.
- [2] Minnesota IMPLAN Group. 2012. 2010 Ohio state and national package database. MIG, Inc., Hudson, WI.
- [3] United States Department of Agriculture National Agricultural Statistics Service. 2012. 2010 Ohio county summaries. http://www.nass.usda.gov/Statistics_by_State/Ohio/Charts_and_Maps/index.asp.
- [4] United States Forest Service Forest Inventory and Analysis. 2012. Northeast Forest Inventory and Analysis Methodology: Common definitions used by FIA. http://www.fs.fed.us/ne/fia/methodology/def_ah.htm.
- [5] United States Forest Service Forest Inventory and Analysis. 2012. Coshocton County 2011 forest survey database. <http://apps.fs.fed.us/fido/standardrpt.html>.
- [6] Minnesota IMPLAN Group. 2004. IMPLAN Professional®: Users Guide, Analysis Guide, Data Guide. 3rd edition. MIG, Inc.

EMPOWERMENT THROUGH EDUCATION

Visit Ohio State University Extension's web site "Ohioline" at: <http://ohioline.osu.edu>

Ohio State University Extension embraces human diversity and is committed to ensuring that all research and related educational programs are available to clientele on a nondiscriminatory basis without regard to age, ancestry, color, disability, gender identity or expression, genetic information, HIV/AIDS status, military status, national origin, race, religion, sex, sexual orientation, or veteran status. This statement is in accordance with United States Civil Rights Laws and the USDA.

Keith L. Smith, Associate Vice President for Agricultural Administration; Associate Dean, College of Food, Agricultural, and Environmental Sciences; Director, Ohio State University Extension; and Gist Chair in Extension Education and Leadership.

For Deaf and Hard of Hearing, please contact Ohio State University Extension using your preferred communication (e-mail, relay services, or video relay services). Phone 1-800-750-0750 between 8 a.m. and 5 p.m. EST Monday through Friday. Inform the operator to dial 614-292-6181.