

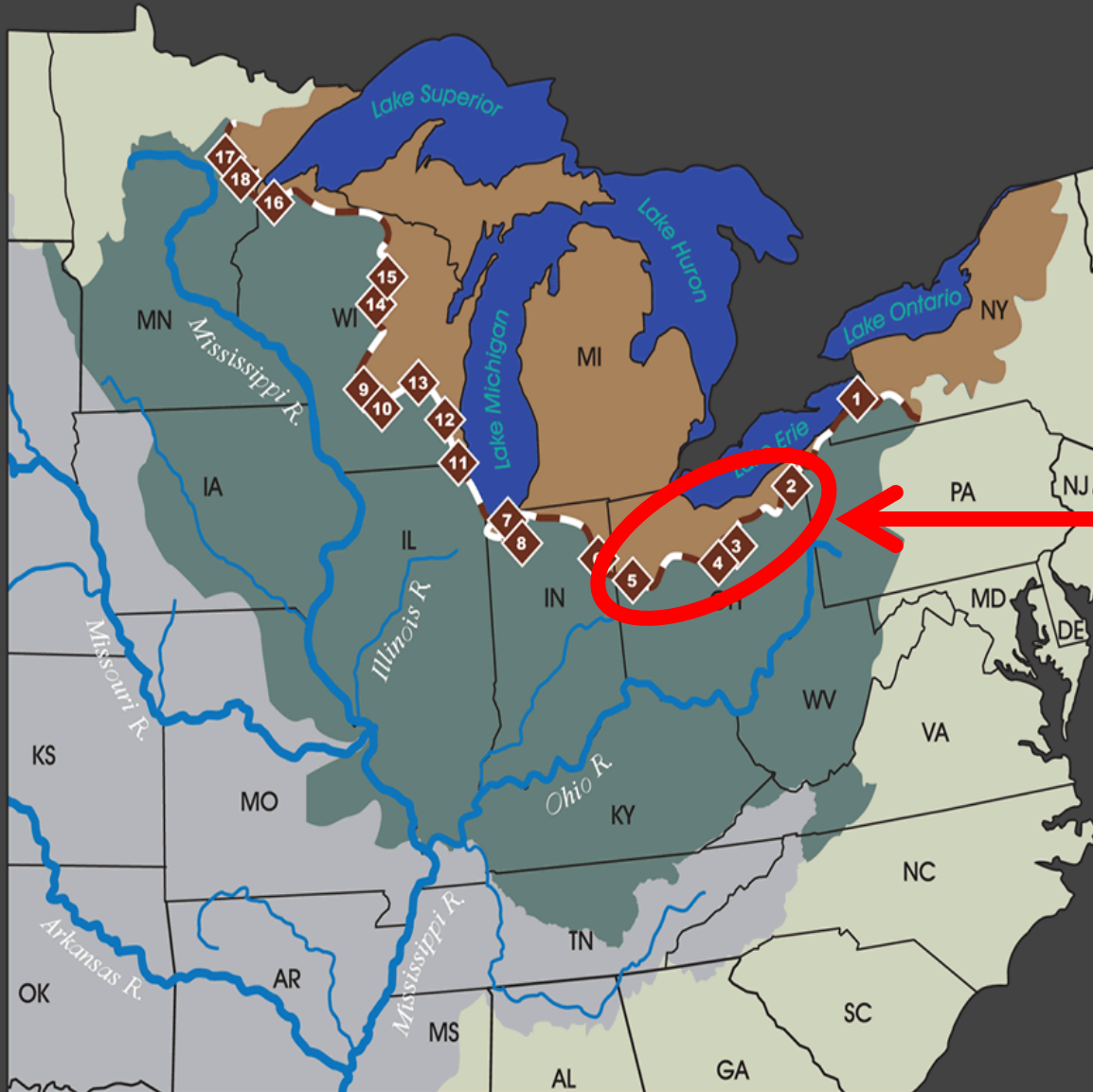
Closing Ohio's Direct Water Pathways

To Conserve and improve Fish and Wildlife resources and their Habitats for sustainable use and appreciation by all



John Navarro
Aquatic Invasive Species Program Administrator

Canals and Waterways



LEGEND

- Great Lakes
- Great Lakes Basin
- Upper Mississippi River Basin
- Lower Mississippi River Basin
- Border of Great Lakes and Upper Mississippi River Basins

NAME	COUNTY	STATE
1 East Mud Lake	Chautauqua	NY
2 Mosquito Lake-Grand River	Trumbull	OH
3 Ohio-Erie Canal at Long Lake	Summit	OH
4 Little Killbuck Creek	Medina	OH
5 Grand Lake-St Marys	Mercer	OH
6 Eagle Marsh, Fort Wayne	Allen	IN
7 Loomis Lake	Porter	IN
8 Parker Ditch - Cobb Ditch	Porter	IN
9 Portage (Upstream)	Columbia	WI
10 Portage (Downstream)	Columbia	WI
11 Jerome Creek	Kenosha	WI
12 W. Menomonee Falls	Waukesha	WI
13 Rosendale - Brandon	Fond du Lac	WI
14 Hatley-Plover River	Marathon	WI
15 S. Aniwa Wetlands	Marathon-Shawano	WI
16 Brule Headwaters	Douglas	WI
17 Swan River	Itasca	MN
18 Libby Branch of Swan River	Aitkin	MN

Canals and Waterways - Rankings

#1: Chicago Area Waterway (Illinois)

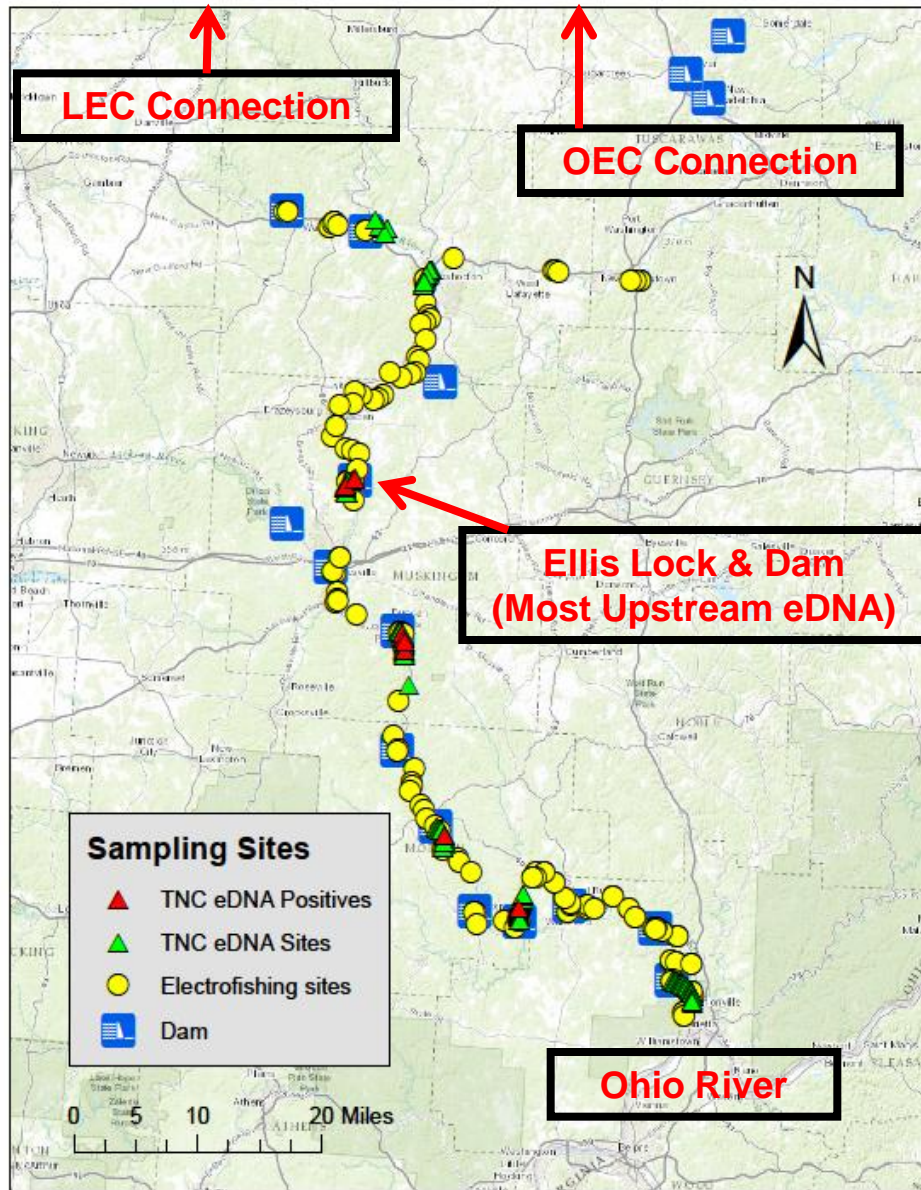
#2: Eagle Marsh (Indiana)

#3: Ohio Erie Canal (Ohio)

#3: Little Killbuck Creek (Ohio)



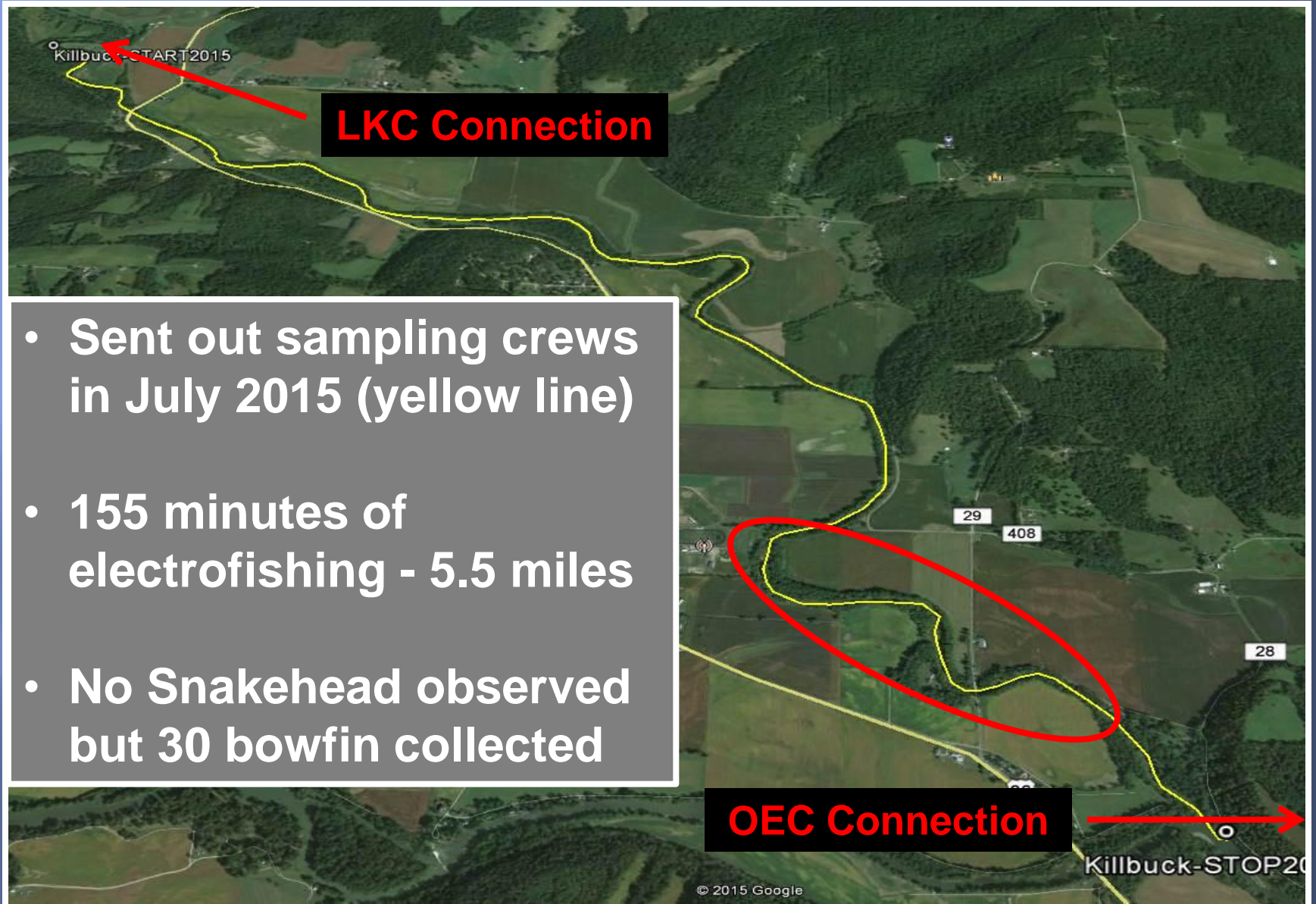
Muskingum River Asian Carp Sampling

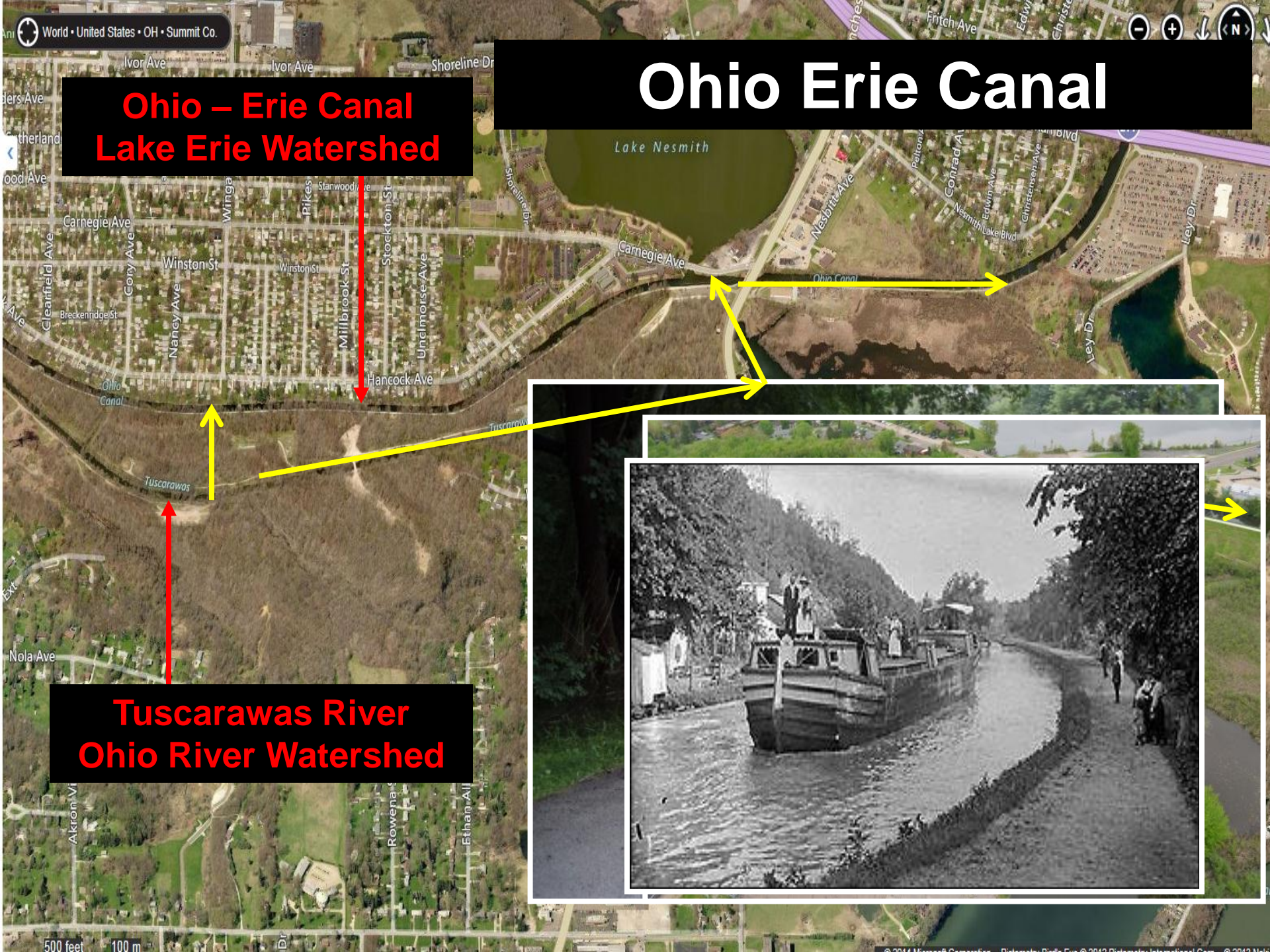


Planned Response to Bighead Carp eDNA Results

- Electrofishing crews
- 23 hours of effort
- 125 sites
- Muskingum River
- Tuscarawas River
- Walhonding Rivers
- No carp observed

Planned Response to Snakehead eDNA

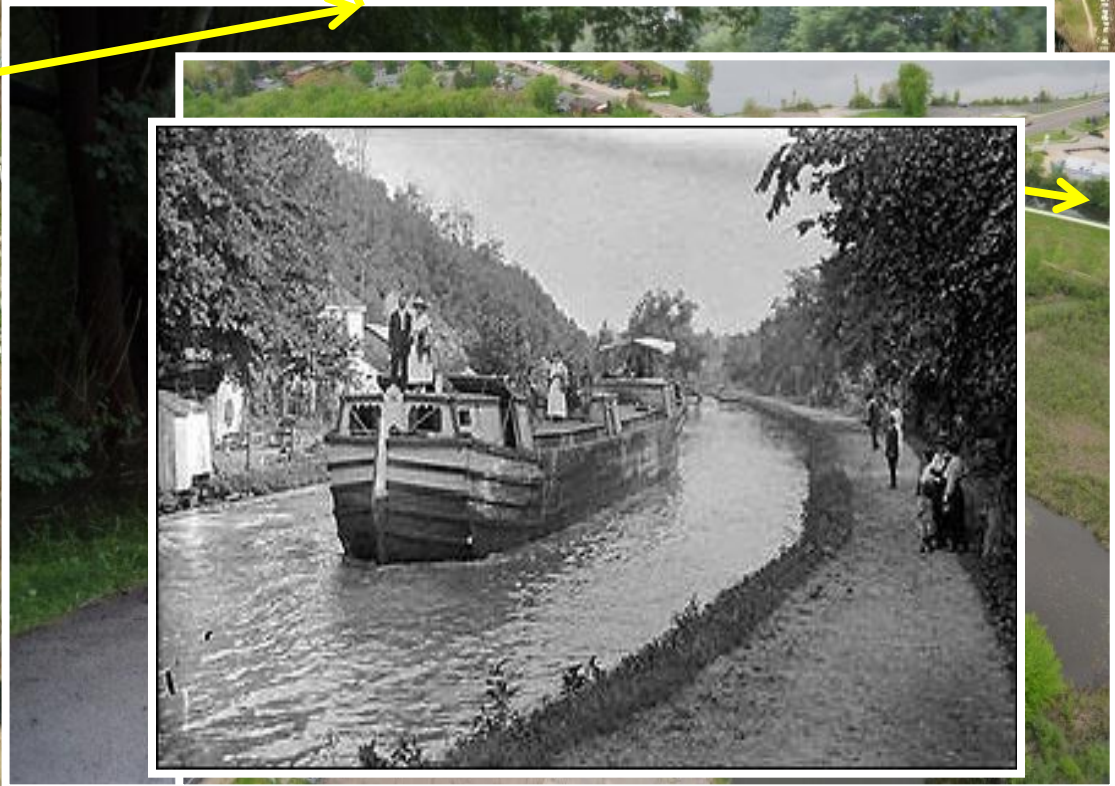




**Ohio – Erie Canal
Lake Erie Watershed**

Ohio Erie Canal

**Tuscarawas River
Ohio River Watershed**



Little Killbuck Creek



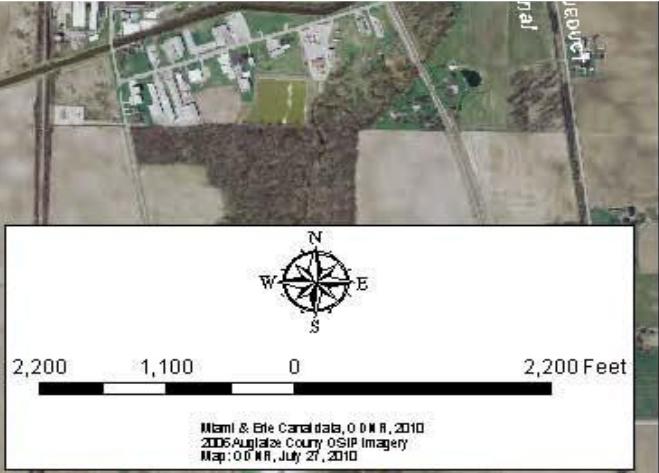
Mosquito Creek Lake



Spillway



Grand Lake St Marys



Questions

