

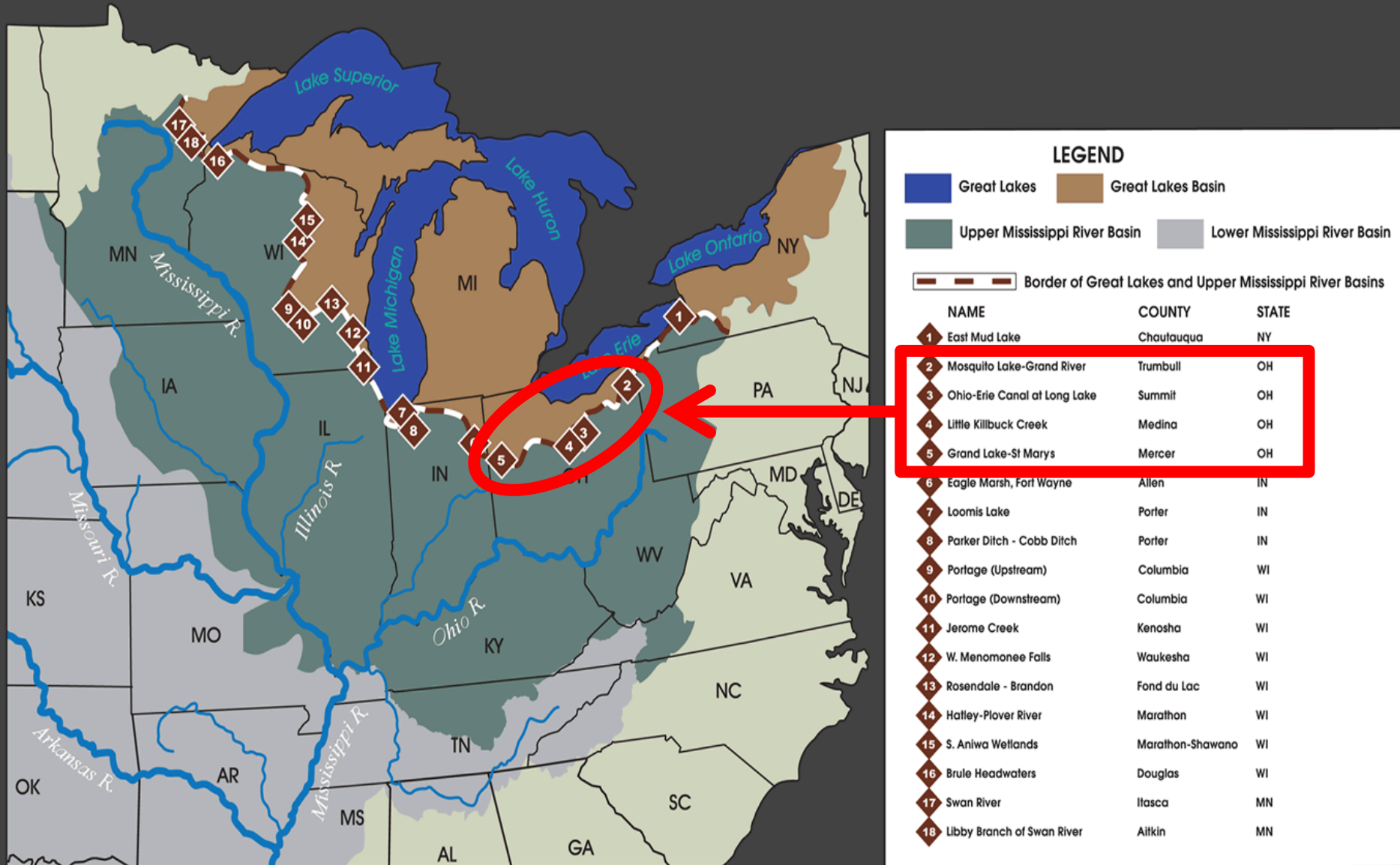
# Closing Ohio's Direct Water Pathways

To Conserve and improve Fish and Wildlife resources and their Habitats for sustainable use and appreciation by all



John Navarro  
Aquatic Invasive Species Program Administrator

# Pathway - Canals and Waterways



# Rankings

#1: Chicago Area Waterway (Illinois)

#2: Eagle Marsh (Indiana)

#3: Ohio Erie Canal (Ohio)

#3: Little Killbuck Creek (Ohio)



# Our Line in the Sand





# Ohio Erie Canal

**Ohio – Erie Canal  
Lake Erie Watershed**

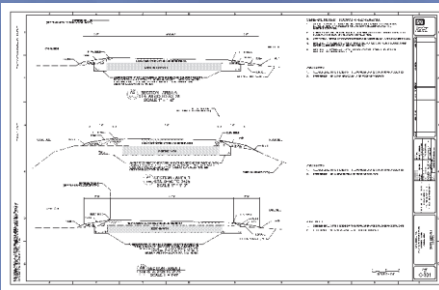
**Tuscarawas River  
Ohio River Watershed**



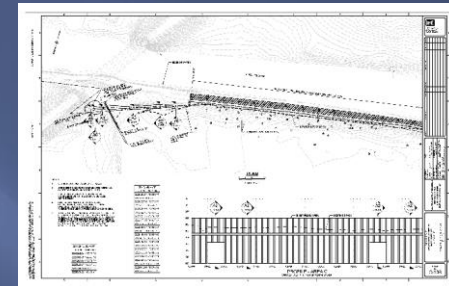
# Low Spots Along the Tow Path



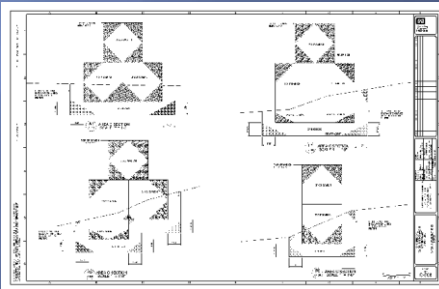
Topdressing



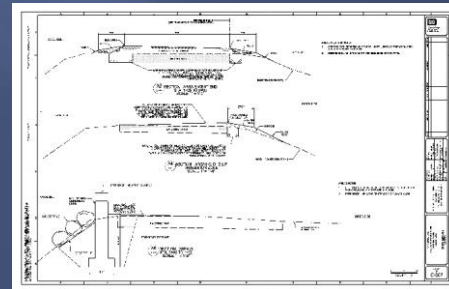
Sheetpile



Gabions



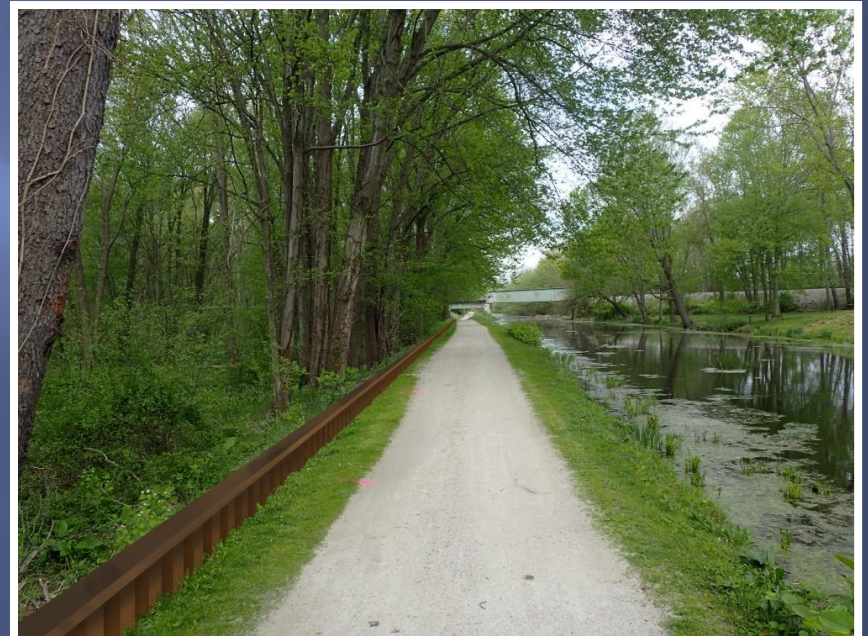
Curb



# Gabions



# Sheetpile



# Curbing



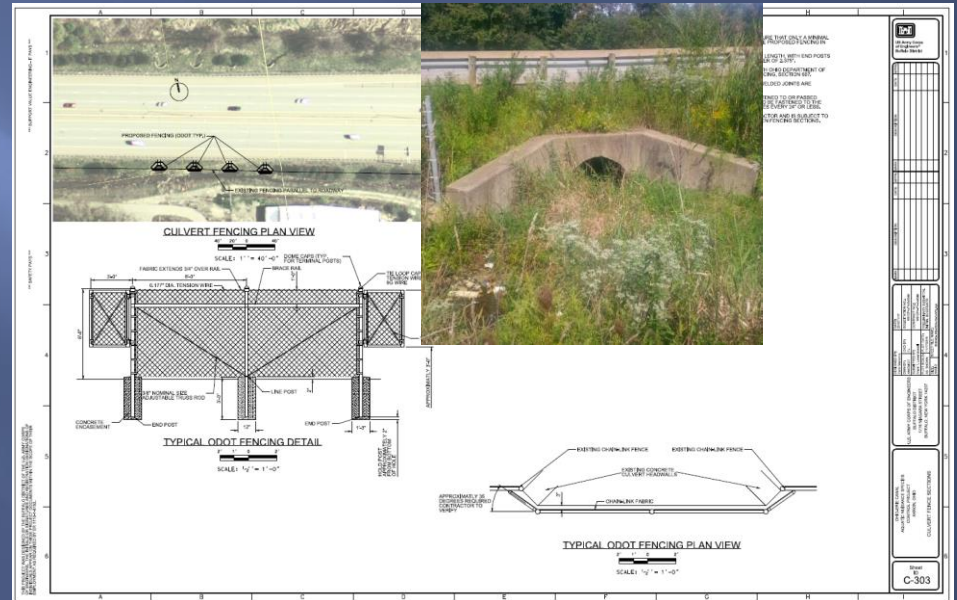
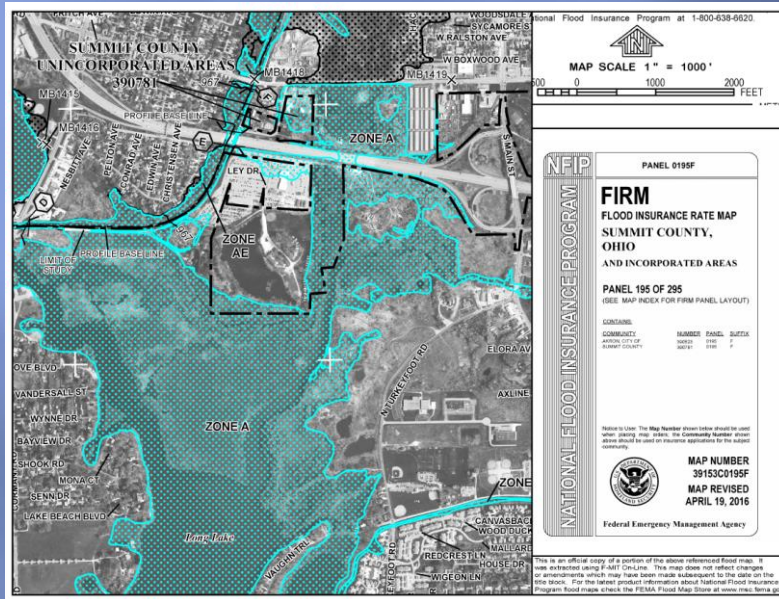
# Canal Outlet at Wolf Creek



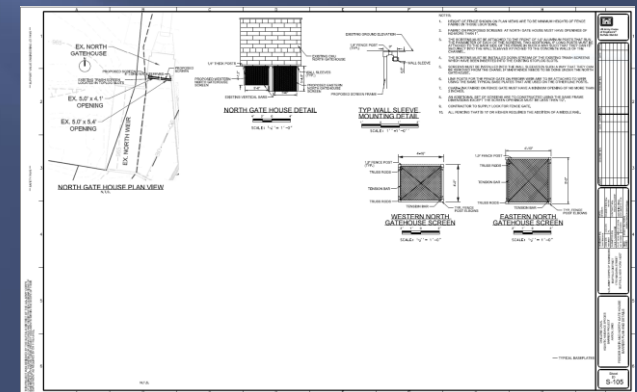
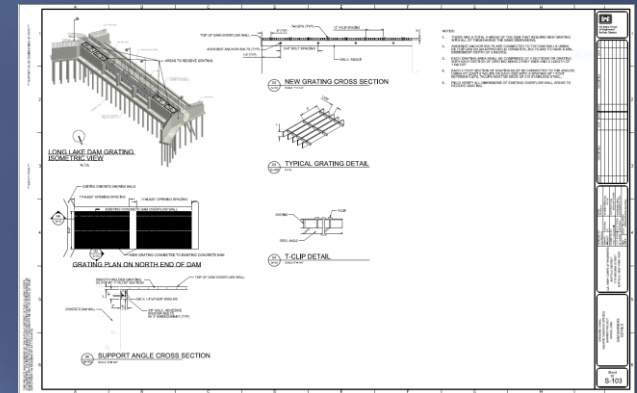
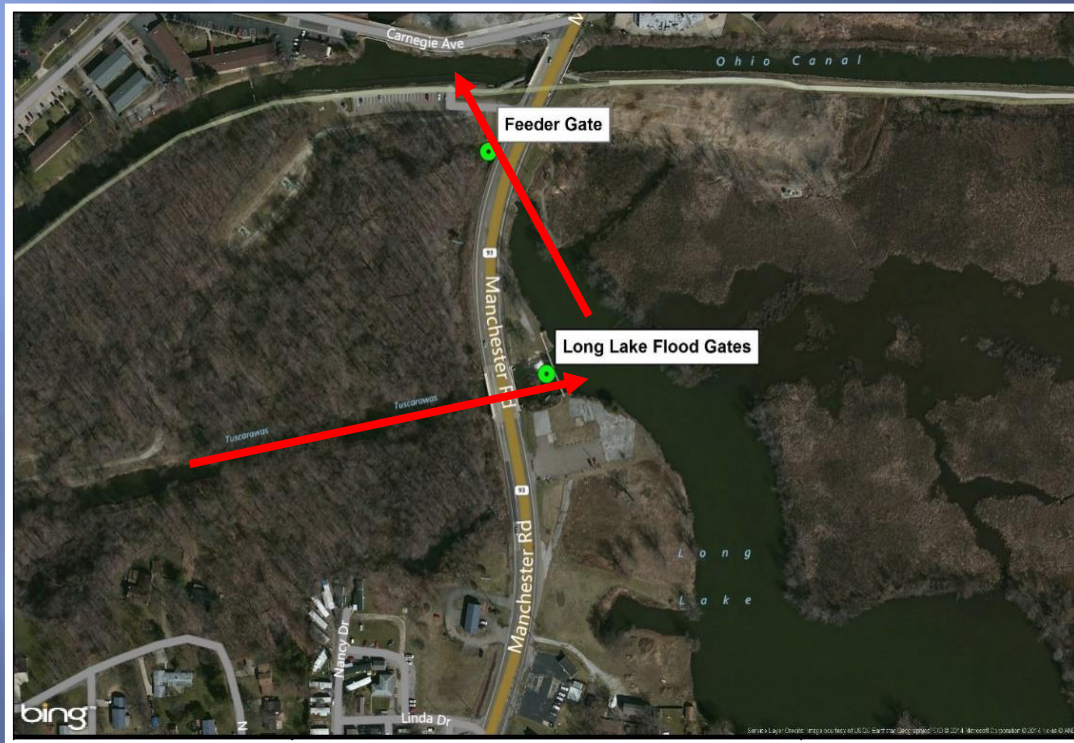
# Lateral Overflow Weir



# Culverts at I-277



# Long Lake Measures



# Long Lake Flood Gates



# Canal Feeder Gate



# Where Do We Go Now?

## Cost

- USACE – 2.4 Million
- Ohio DNR - \$115,000

## Funding Thru FY2018

- USACE - Phase I Construction
- Ohio DNR – SHPO and O&M

## Future Funding FY2019

- USACE – O&M manual
- Ongoing O&M

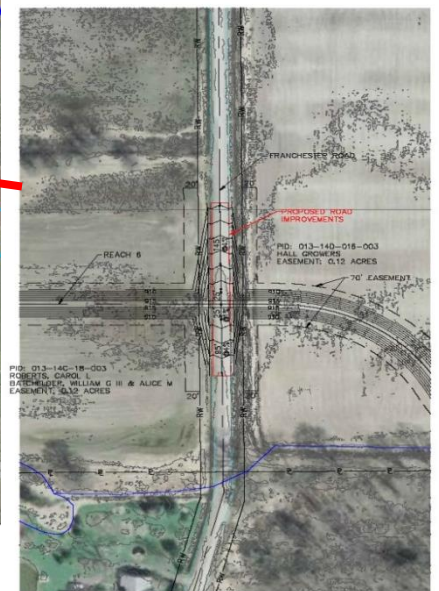
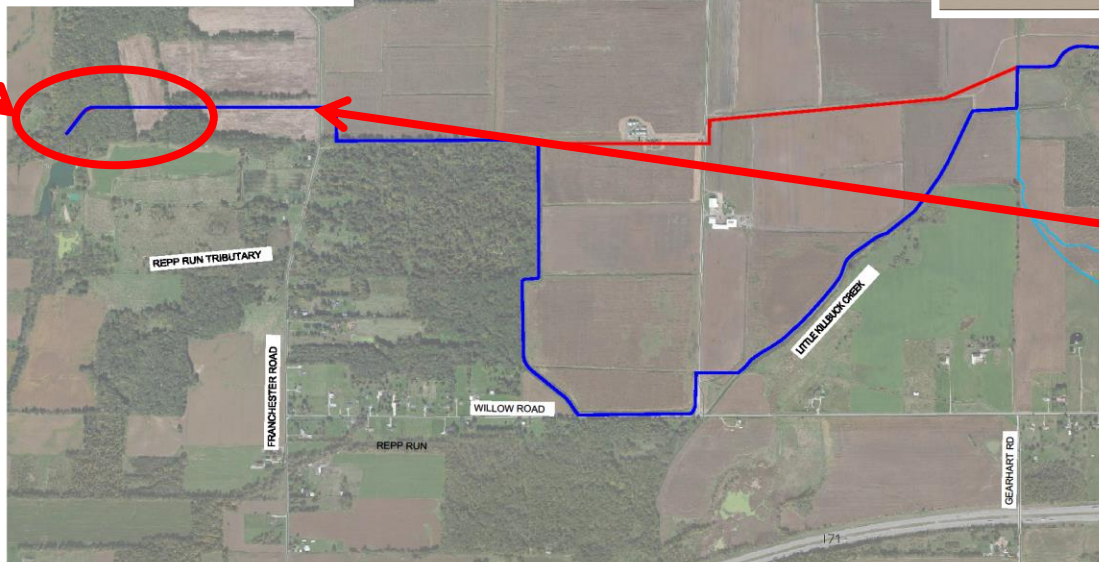
# Little Killbuck Creek



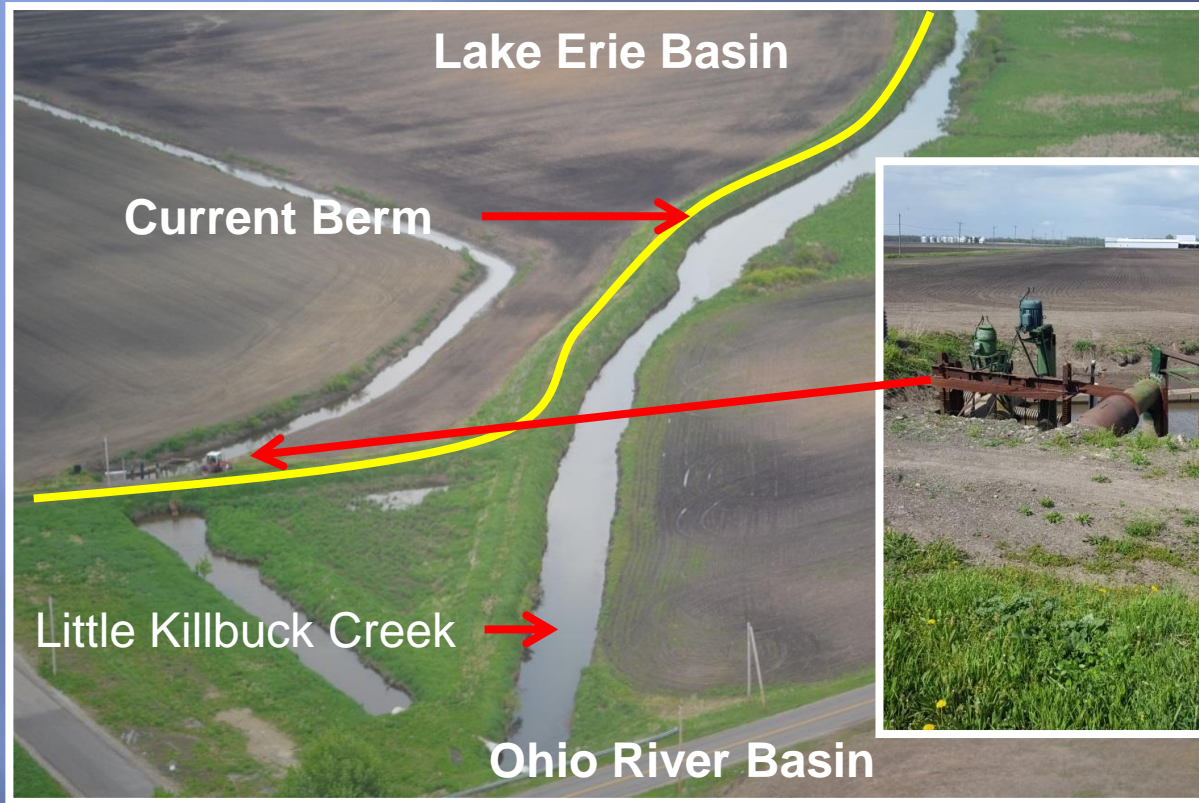
## 14,500-linear feet (2.75 Miles)

## 19,800-lineal feet (3.75 Miles)

# Dike Alignment Wetlands/Roadway/Cultural



# Flooding/Drainage/Irrigation



# Where Do We Go Now?

## Cost

- \$4.4 Million - Original estimate
- \$12.16 Million - Option A
- \$16.04 Million - Option B

## Funding Thru FY2018

- 25 Percent design – Study and Report
- Study and Report to USACE
- Determine alignment
- Property negotiations/acquisitions

## Future Funding FY2019

- Final Design
- Acquire Borrow/Flood Mitigation Sites
- Construction in Stages