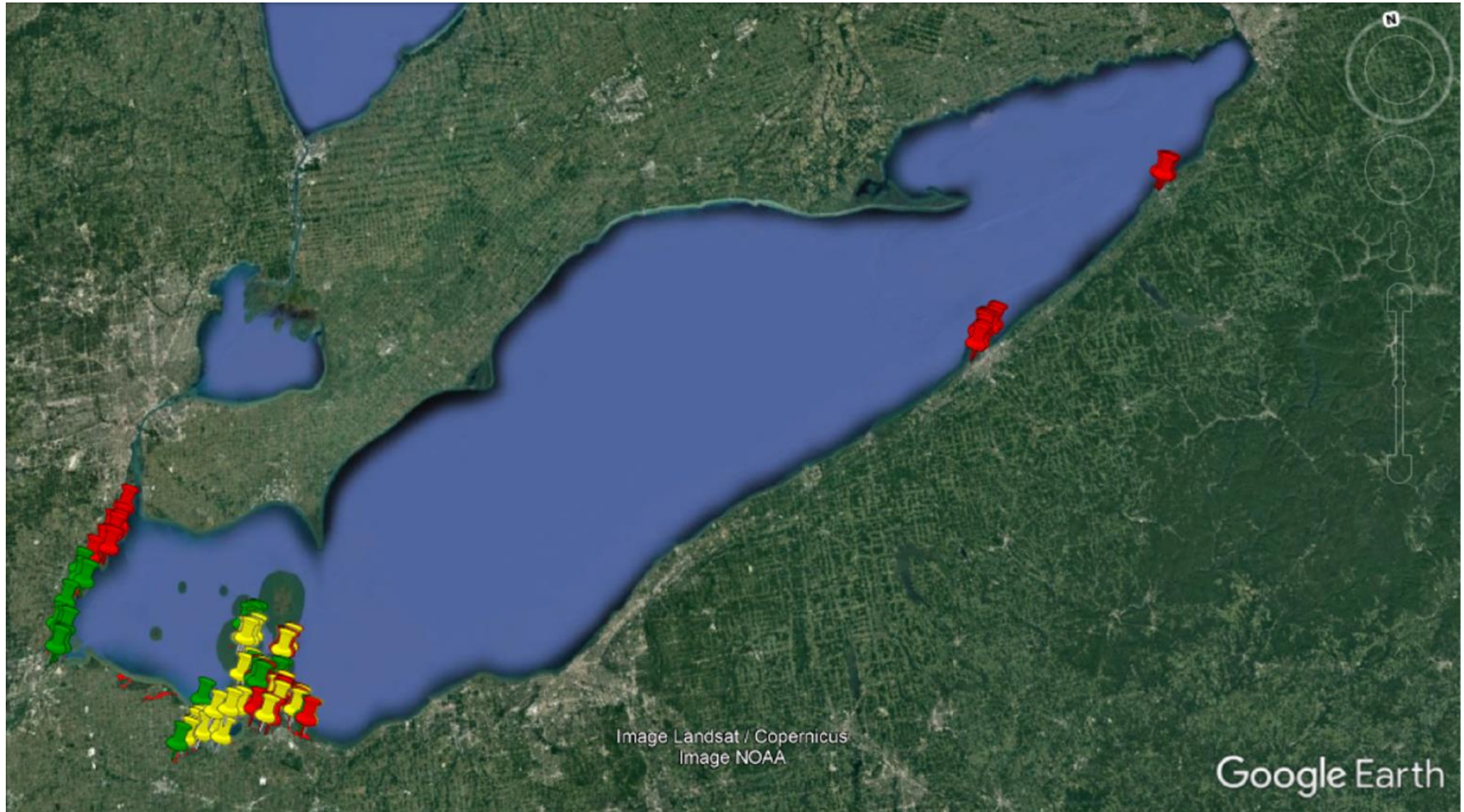


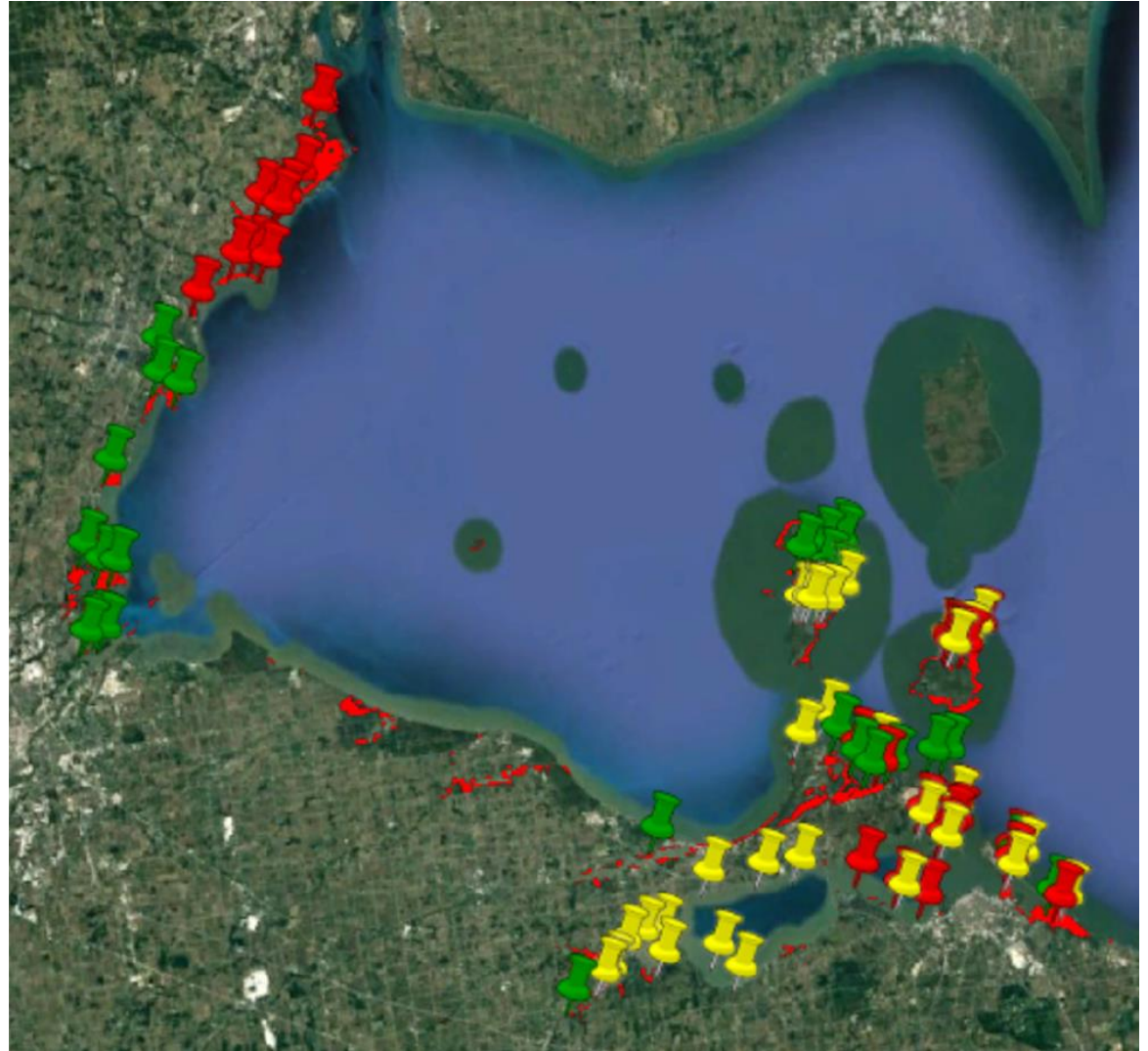
Sample locations 2016-2018



2018 additions : Michigan shoreline, Presque Isle, Dunkirk Harbor

2018 updates

- Completed most of US Western Basin
- Re-sampled
 - Cedar Point
 - Johnson's Island
 - Kelley's Island
- Veg processing not yet completed
- Sonar processing not yet completed



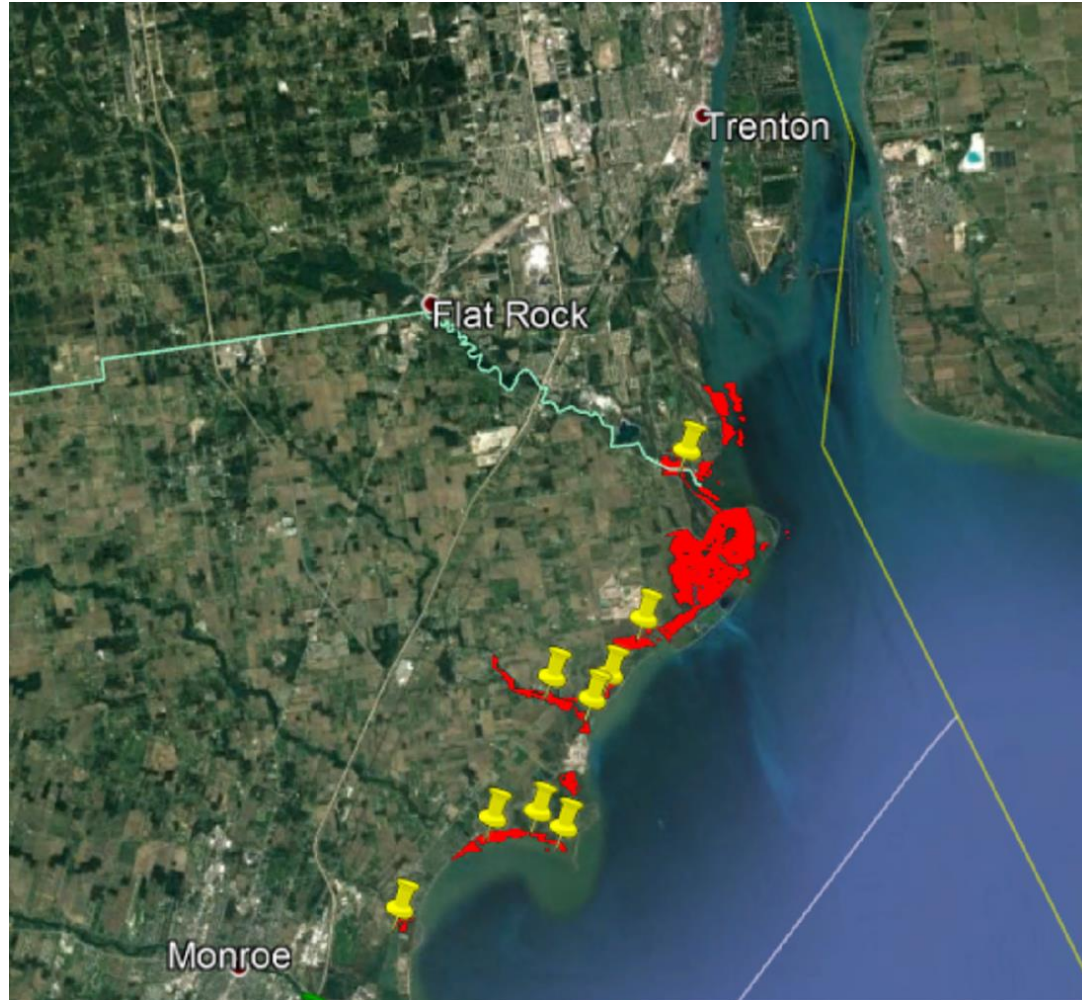
Presque Isle Sampling Locations



Dunkirk Harbor Sampling Locations

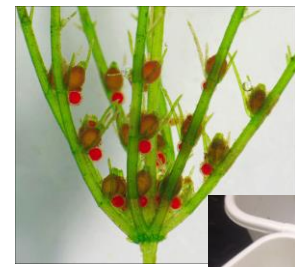


Michigan Sampling Locations

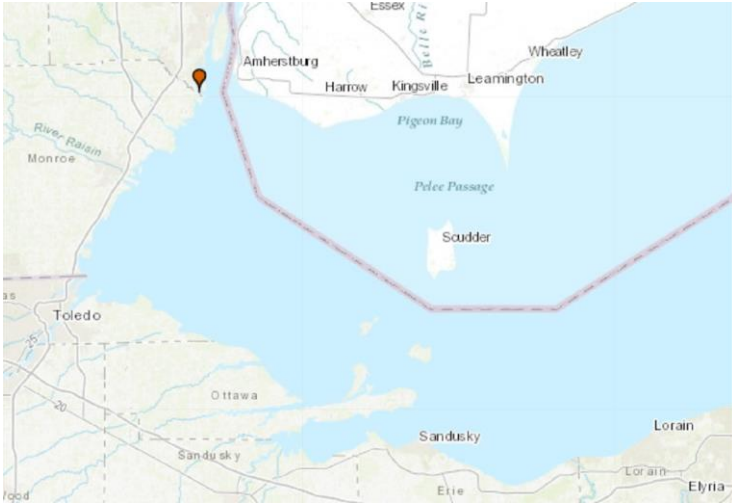


2018 Vegetation Taxa List

- Callitriche* spp. (Water starwort) **
- Ceratophyllum demersum* (Coontail)
- Chara* spp. (Muskgrass) **
- Elodea* spp. (Waterweed)
- Fissidens fontanus* (Water pocketmoss) **
- Hydrocharis morsus-ranae* (European frogbit) **
- Myriophyllum spicatum* (Eurasian watermilfoil)
- Najas flexilis* (Northern waternymph)
- Najas gracillima* (Slender waternymph)
- Najas guadalupensis* (Southern waternymph)
- Najas minor* (Brittle waternymph)
- Nitella* spp. (Stonewort)
- Nitellopsis obtusa* (Starry stonewort)
- Potamogeton crispus* (Curly-leaf pondweed) **
- Potamogeton illinoensis* (Illinois pondweed) **
- Potamogeton nodosus* (Longleaf pondweed)
- Potamogeton pectinatus* (Sago pondweed)
- Potamogeton pusillus* (Small pondweed)
- Potamogeton richardsonii* (Richardson's pondweed)
- Utricularia vulgaris* (Common bladderwort)
- Vallisneria americana* (Eelgrass)
- Zannicellia palustris* (Horned pondweed)
- Zosterella dubia* (Water stargrass)



New invasive occurrences



Nitellopsis obtusa

Pointe Mouille State Game Area



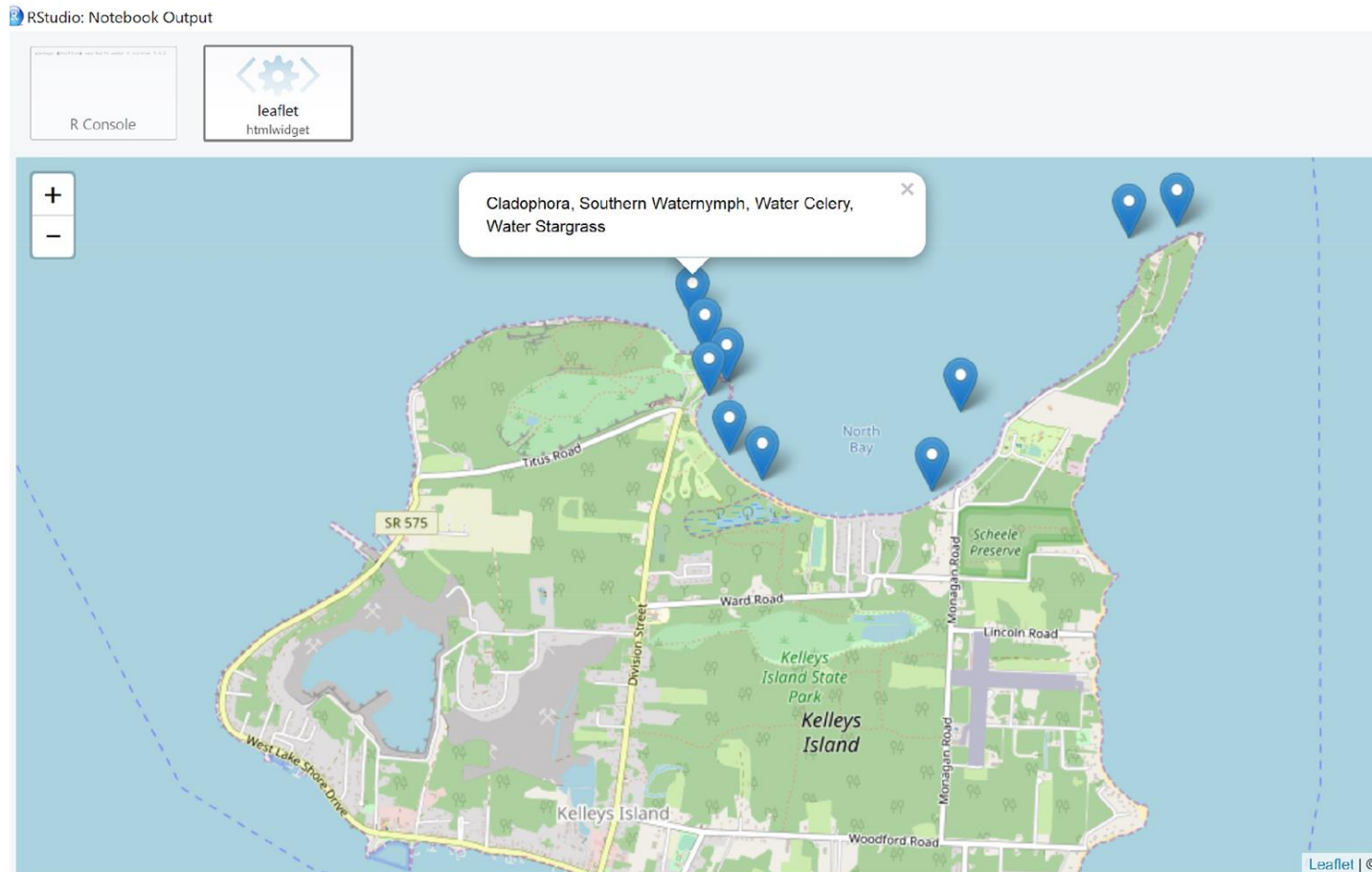
Potamogeton crispus

Swan Creek

No new occurrences documented
for Ohio – YOU'RE WELCOME JOHN

Working on completing interactive map showing OBIA, Sonar, and Taxa in R using 'leaflet'

(if you area familiar with 'leaflet' assistance would be appreciated!)



Will expand heat map of GC feeding preferences when samples are processed

