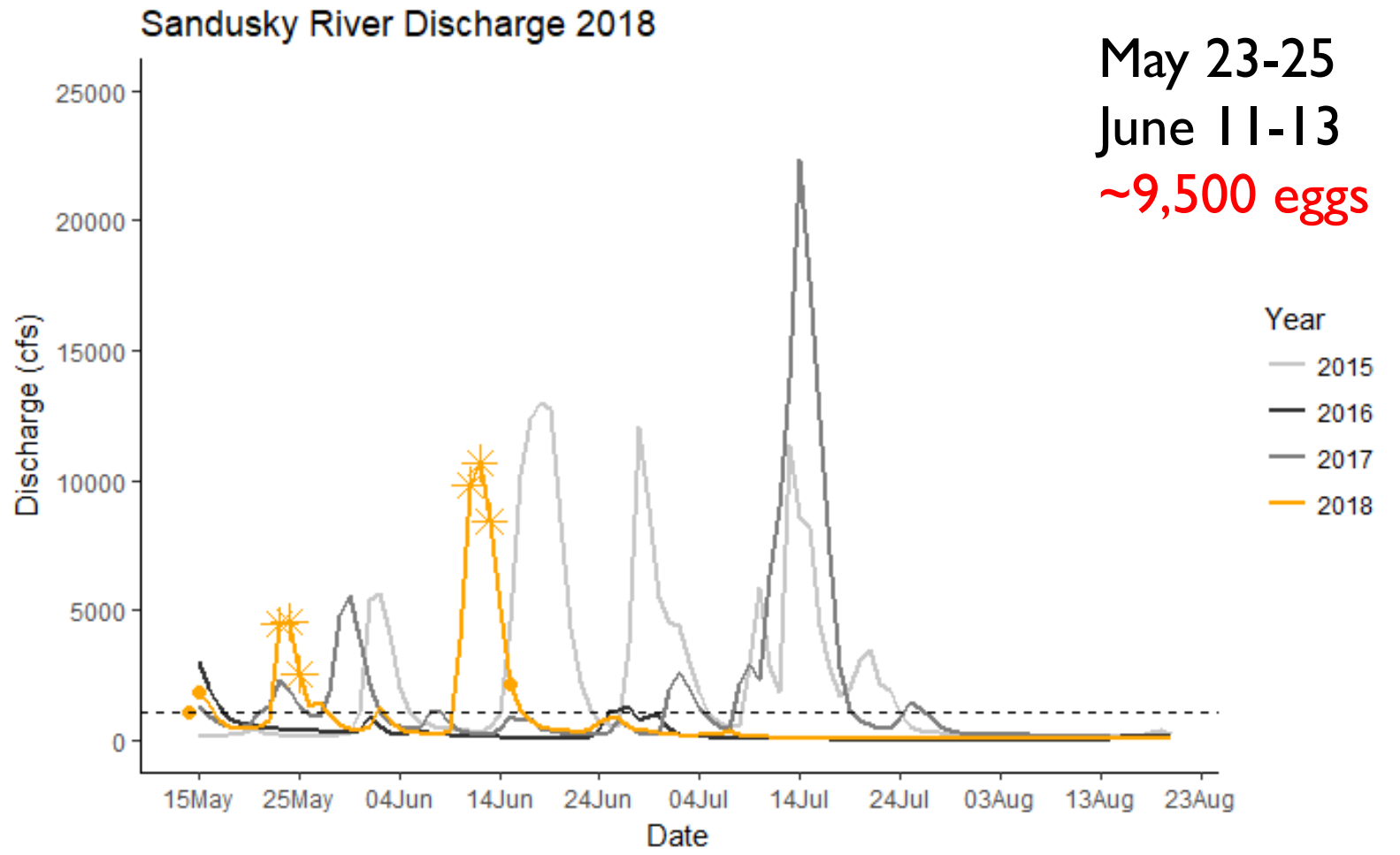


2018 GRASS CARP SPAWNING UPDATES

Nicole King, Christine Mayer, Song Qian
University of Toledo Department of Environmental Science & Lake Erie Center

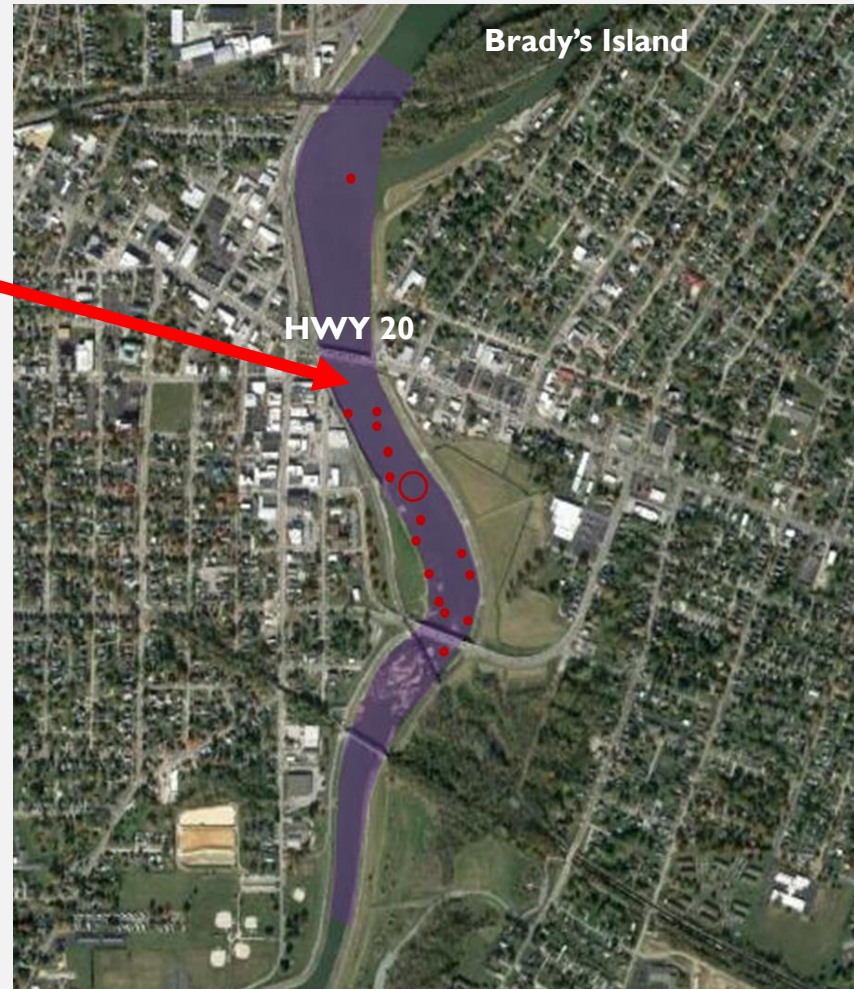
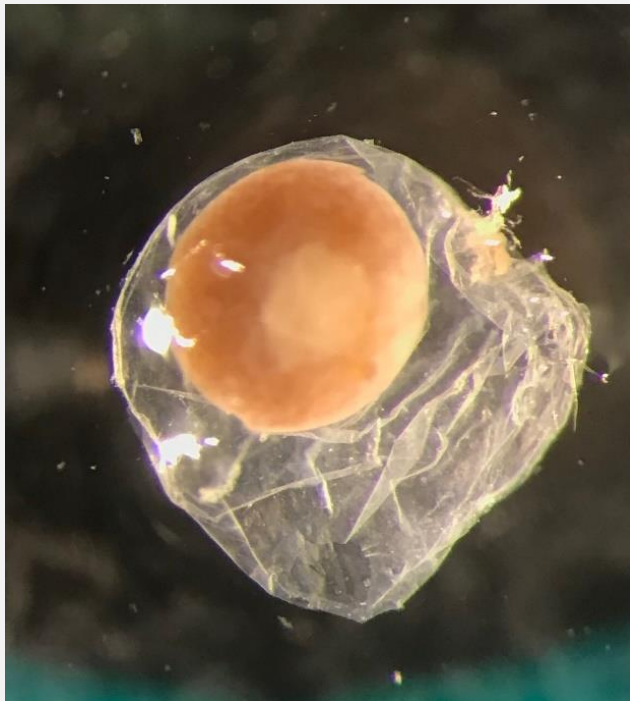
Patrick Kocovsky
U.S. Geological Survey Lake Erie Biological Station

SANDUSKY 2018: 2 SPAWNING EVENTS



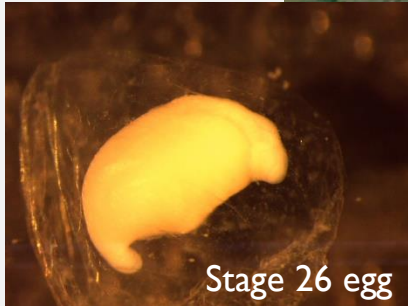
SPAWNING LOCATION VERIFIED

Stage I eggs
just upstream
of HWY 20

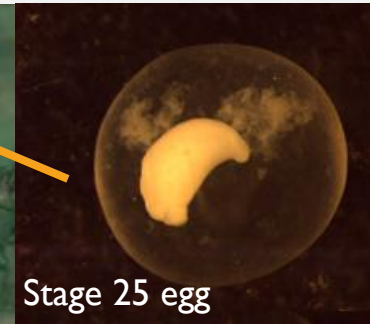


June event coincided w/ODNR Planned Action

NOTABLE 2018 EGG CAPTURE

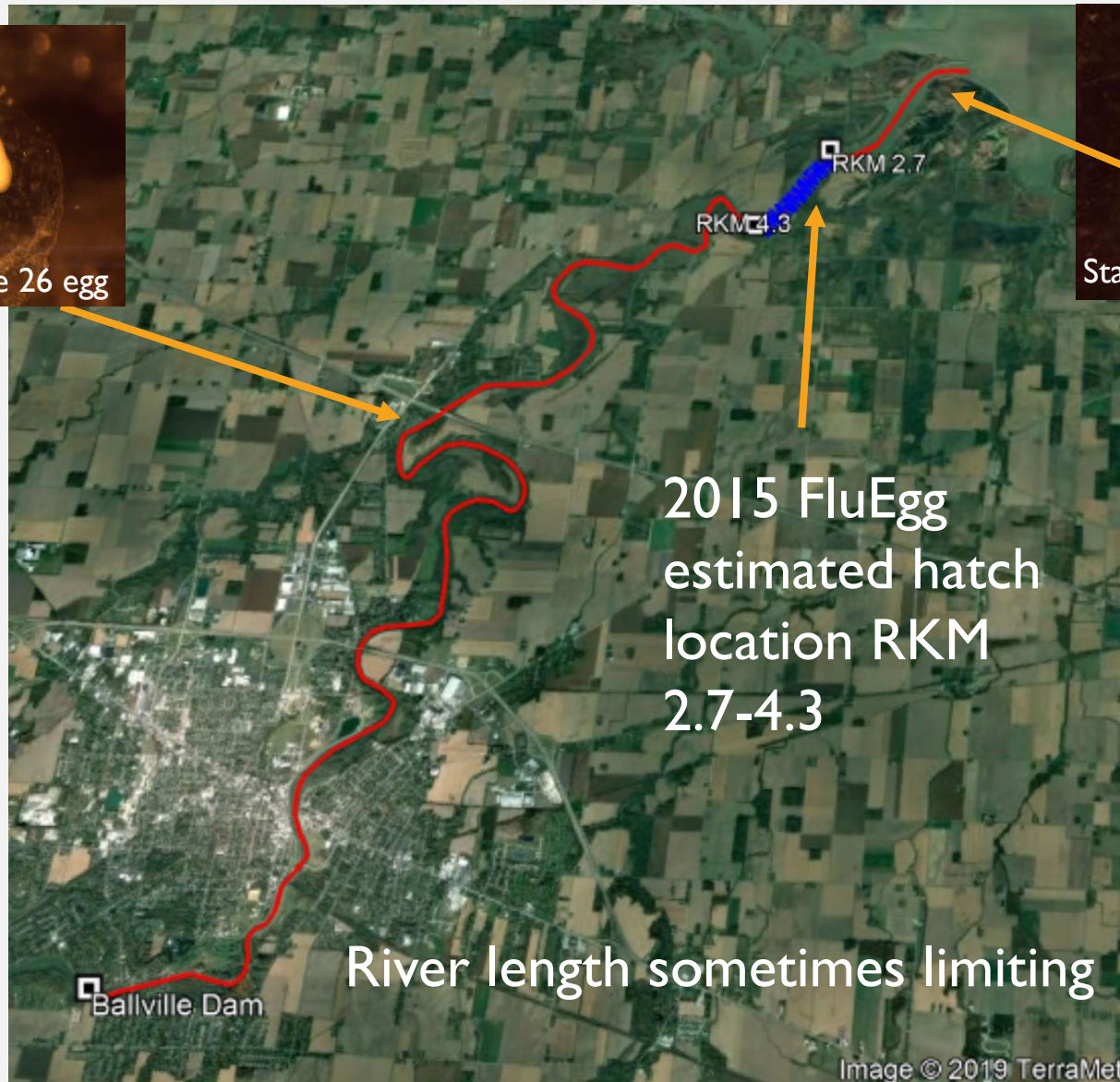


RKM 12
2500 cfs, 67F
(2018)



Stage 25 egg

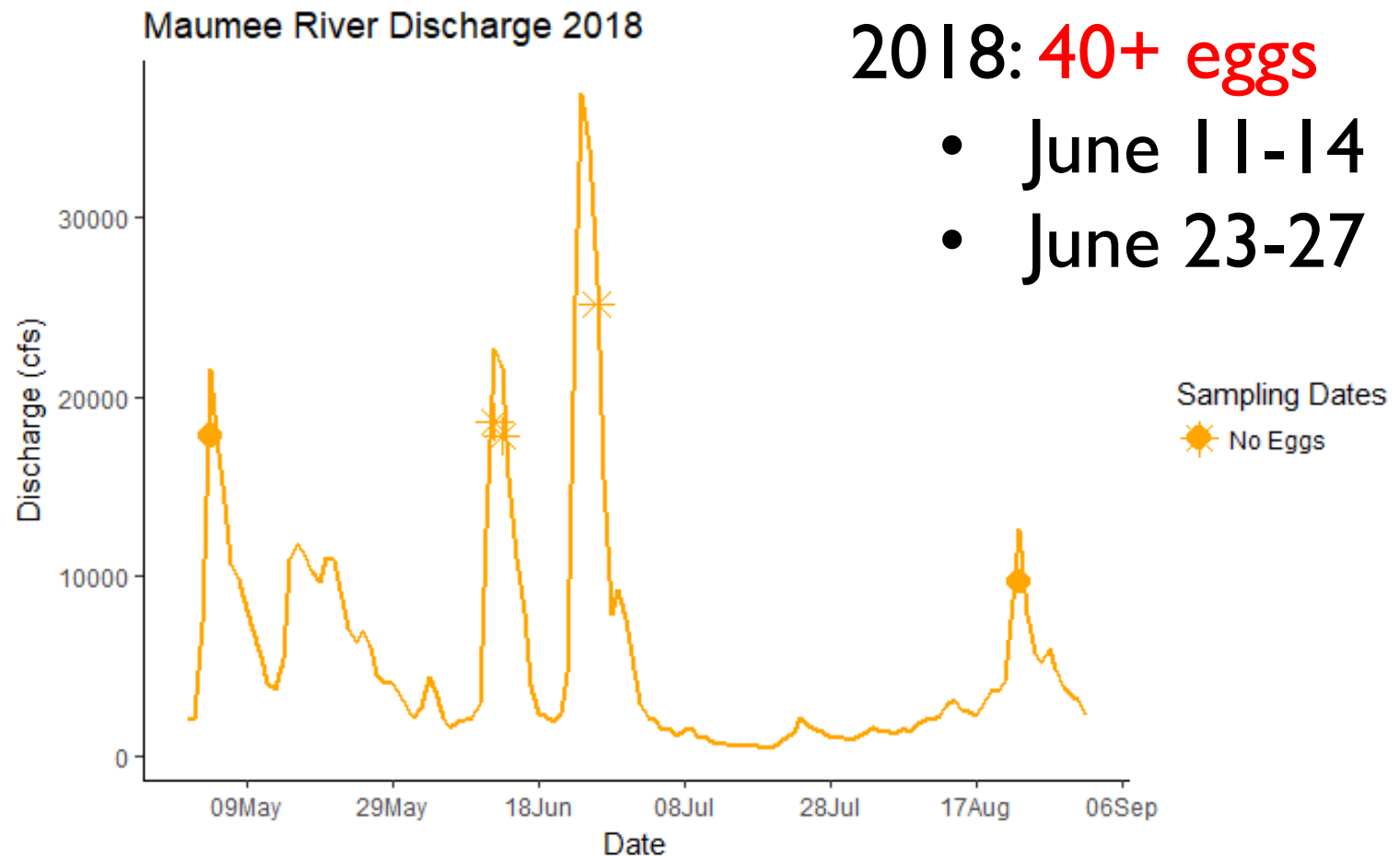
RKM 1.5
9000 cfs, 70F
(2017)



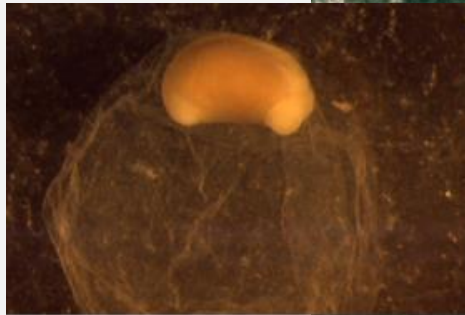
2015 FluEgg
estimated hatch
location RKM
2.7-4.3

River length sometimes limiting

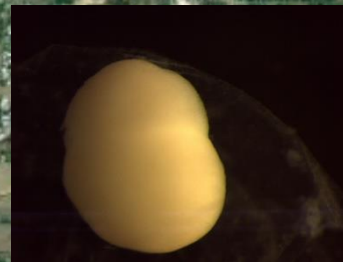
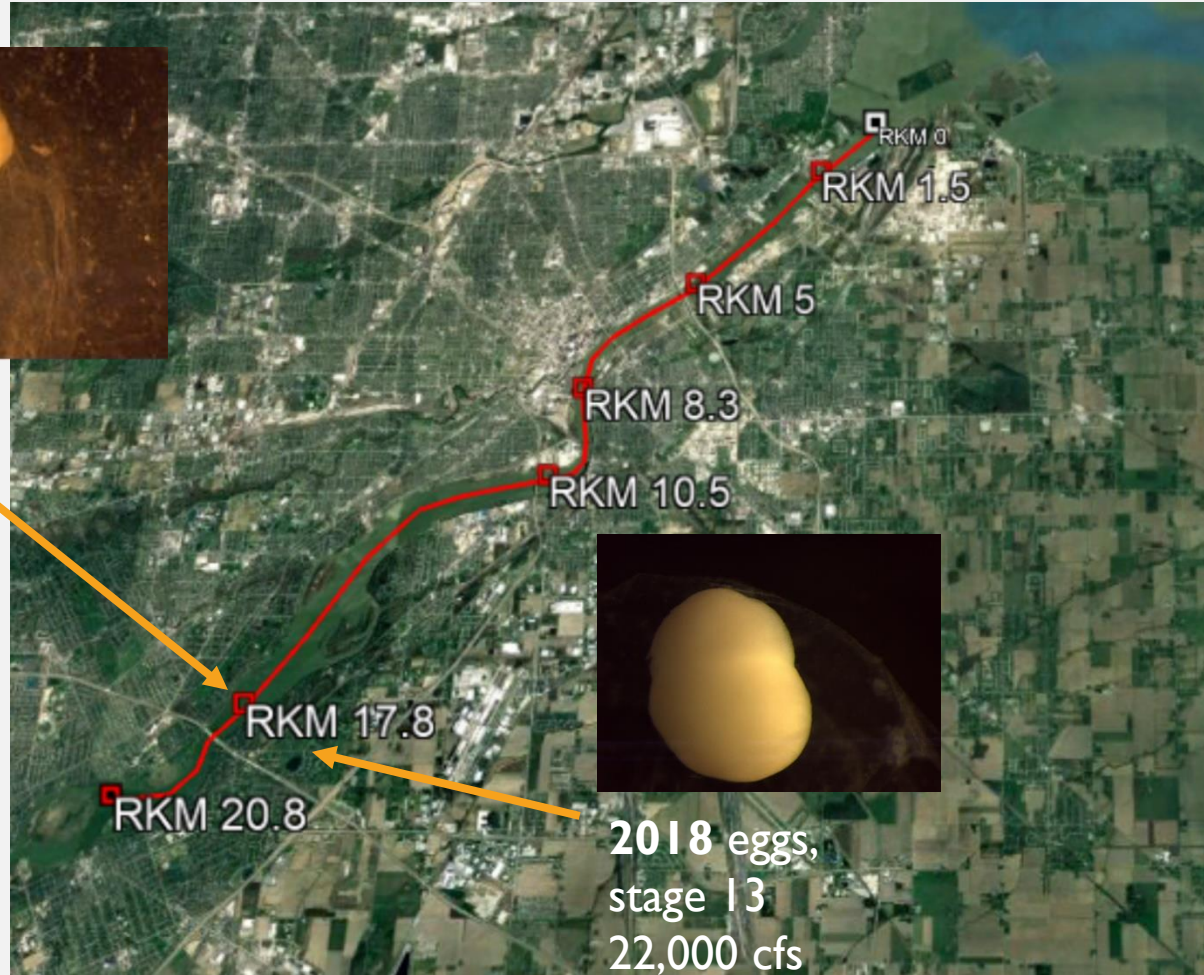
MAUMEE 2018: 2 SPAWNING EVENTS



MAUMEE RIVER 2018



2017 eggs,
stage 25
42,000 cfs



2018 eggs,
stage 13
22,000 cfs

Plenty of river length, spawning locations?? Why stage
13 v 25 at same location?

2018 MAUMEE RIVER LARVAL CAPTURES

2 larva captured 6/13/18

Stages ~31 and ~32

Downstream 280 bridge (~RKM 5)

21,700 cfs, 20.5C, descending hydrograph

4 larva captured 6/26/18

Stage ~32

Brenners Marina (~RKM 1.5)

24,100 cfs, 22.5C, descending hydrograph

