

Columbus Metro Parks

Zane Robertson, Maintenance Tech Intern

INTRODUCTION

I was a maintenance tech for the summer of 2021 at Battelle Darby Creek metro park. This park is located in Galloway, Ohio. I began in early May and continued my employment there until mid August. Being able to work at the metro parks is an amazing opportunity to get your foot in the door if you are interested in a job in a local park. I was lucky enough to get to select the park I worked at and chose the biggest metro park with the most to offer visitors. Learning the maintenance of a park that size brings into perspective how much it takes and gives you more of an appreciation for our local parks.



Logo of Columbus Metro Parks

BACKGROUND

The metro parks are a great company to work for that offer outstanding benefits and a great work environment with supportive management. I grew up within ten minutes of this park I worked at so I was familiar with the park from a visitor point of view. I attended virtual career fairs to find an internship and then got in contact with human resources who started the interview process.

The Nature Center at BDC



MISSION STATEMENT

The mission of Metro Parks is to conserve open spaces, while providing places and opportunities that encourage people to discover and experience nature.



DAY TO DAY

A typical day when you work at Battelle Darby Creek is full of surprises. We are the biggest park in the metro system and cover around 7,500 acres. There is constantly something to do with your team. Here are some of the things that I was involved in this past summer.

- Cleaning/Sanitation
- Mowing
- Trail maintenance
- Log jam on the Creek
- Tree trimming
- Barn restoration
- Shelter demolition
- Living stream maintenance
- Invasive species removal
- CSI program mentor
- Visitor service
- Bison care



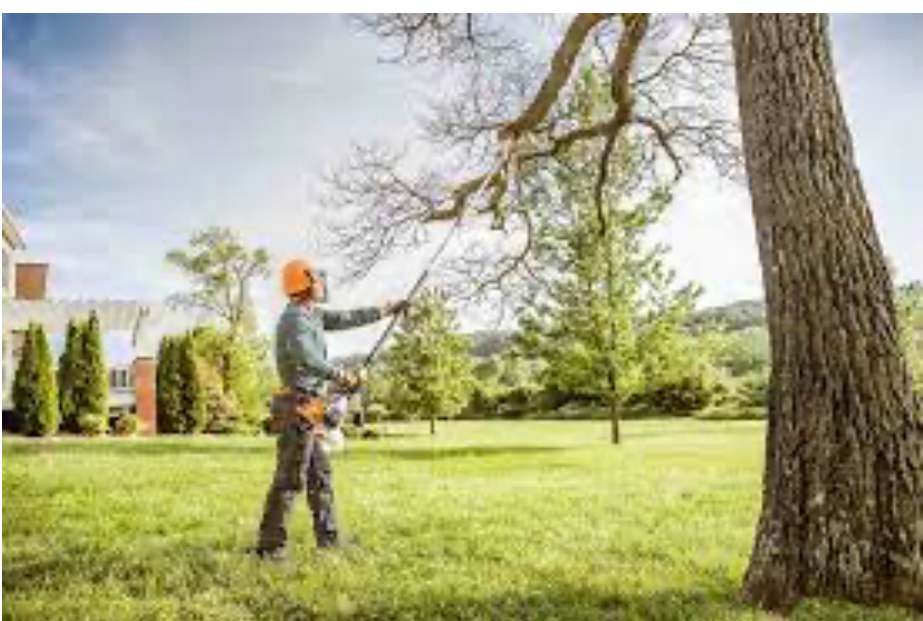
Bison in open prairie at BDC



Bridge The log jam was at



Wetland bridge

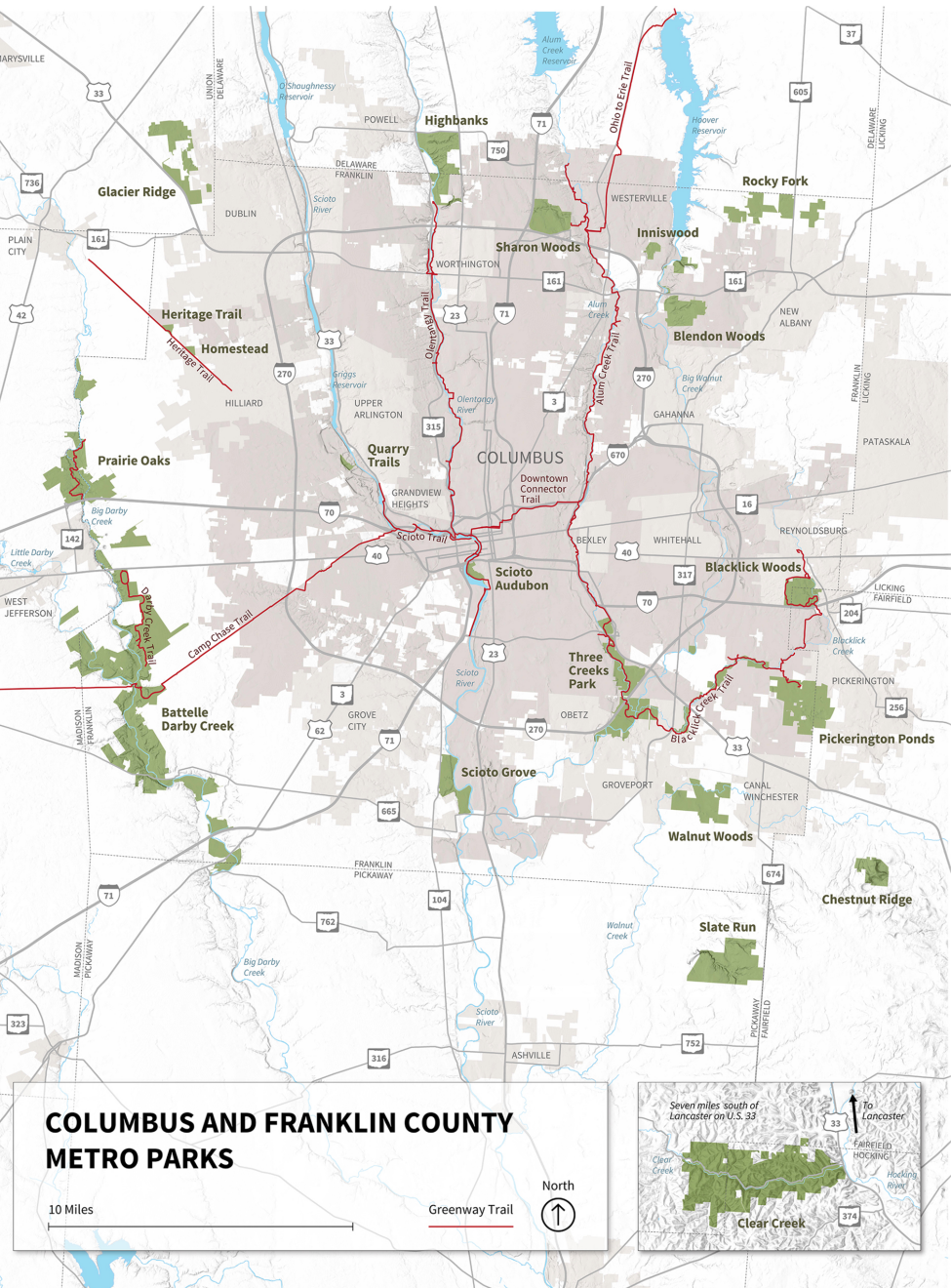


Trimming trees

REFLECTION

This internship is a lot of the behind the scenes work that tends to go unrecognized by visitors but is valued very highly by all. If you have an aspiration to be a park manager this is a great internship to understand the ground work that you will manage one day. Personally if my career was going to be in park management I would continue with this internship and career path. The best opportunity for me and my personal goals is not in natural resource management so I will not continue with this. If I had one piece of advice for a future student it would be to be very active and maximize your opportunity and ask as many questions as you can.

Overview of all metro parks



THE OHIO STATE UNIVERSITY

<https://www.metroparks.net/about-us/>